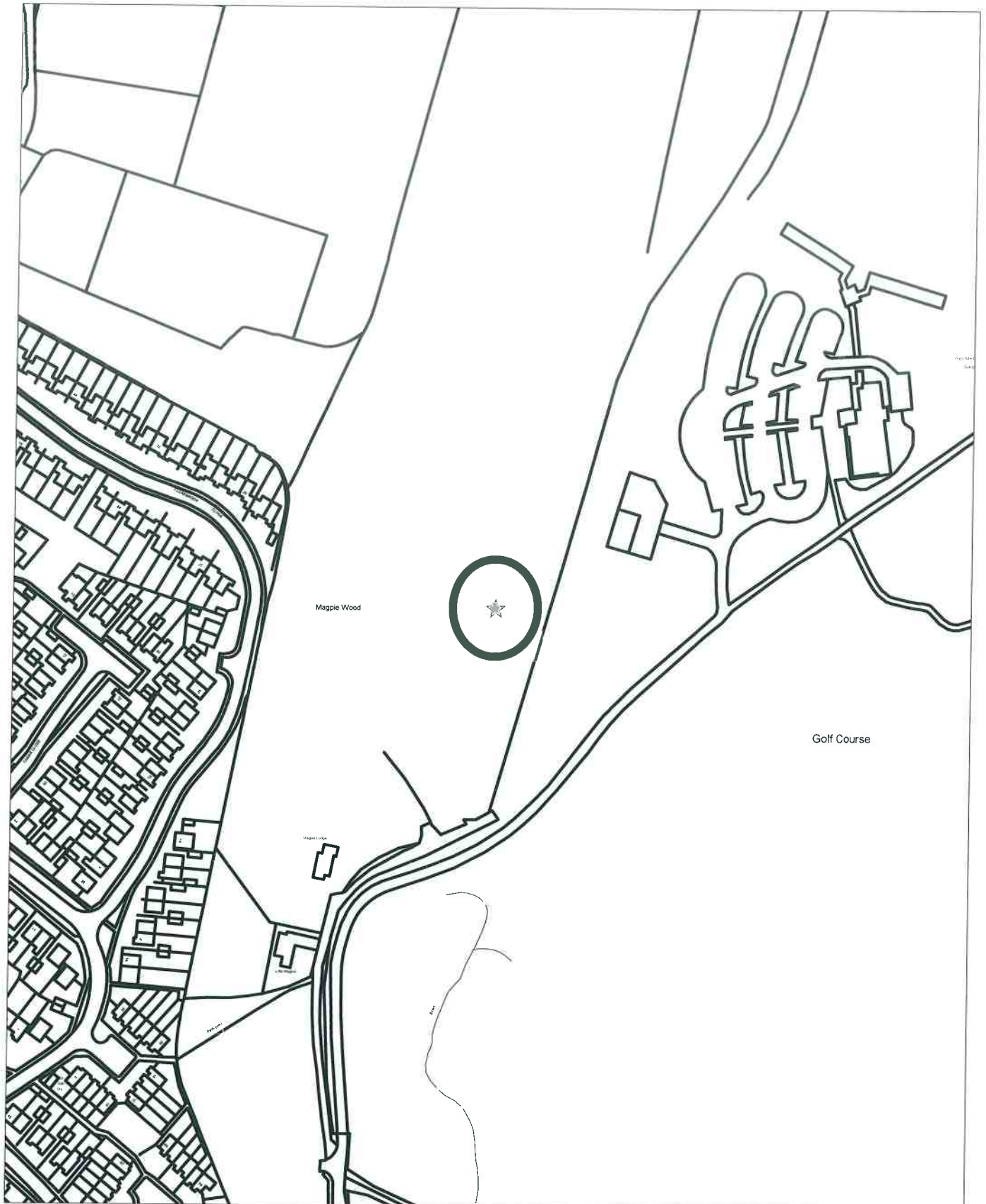


19/05996/FUL
Scale 1/2500





WYCOMBE HEIGHTS

Revision History



Professional Chartered
Landscapers

11-12, Church Square, Bicester, Oxfordshire, OX9 3DQ
Tel: 01295 242000 Fax: 01295 242001
www.gouttgolfdesign.co.uk



Client:	Burhill Group Limited
Project:	Wycombe Heights Golf Centre
Drawing:	Proposed Irrigation Reservoir Application Location Plan
Drawn By:	J.C.G.
Checked By:	L.10000@A3
Issue No:	GCD-18-2-2443
Date:	29th Oct 2018
Rev. No:	1
Rev. Date:	1



Extent of ownership

Application Area (0.82Ha)

Wycombe Heights Golf Centre

Site of proposed reservoir

Wycombe Heights GC Water Storage

This drawing shows the area of the proposed water storage reservoir.

Client	XXX	Date	08/04/19	Scale	1:500 / A2	Revision	58723PD/01	Drawn by	T
--------	-----	------	----------	-------	------------	----------	------------	----------	---

LH HYDREAU
Consulting Engineers
Hydrology · Water Engineering · Drainage · Irrigation
Blackbird Cottage · Main Street · Evesby · Skelton ·
Lincolnshire · NG34 9RN
T: 0333 600 7005 E: enquiries@hydreau.co.uk www.hydreau.co.uk



MCD

Wycombe Heights Golf Centre

Plan of proposed reservoir with aerial imagery and surveyed ground levels

Wycombe Heights GC Water Storage

Scale: 1:500 / A2

Date: 08/04/19

Project No: 587.2.3.PD.03

Sheet No: 1

Drawn by: M.V.



Hydrology, Water Engineering, Drainage, Irrigation
Blackbird Cottage, Main Street, Ewby, Slufield,
Leicestershire, NG34 9PH
T: 0133 600 7005 E: manous@hydreauk.uk www.hydreauk.uk



Bank top at 106.70
Bed at 99.70



Wycombe Heights Golf Centre

Plan of proposed reservoir with alignments

Wycombe Heights GC Water Storage

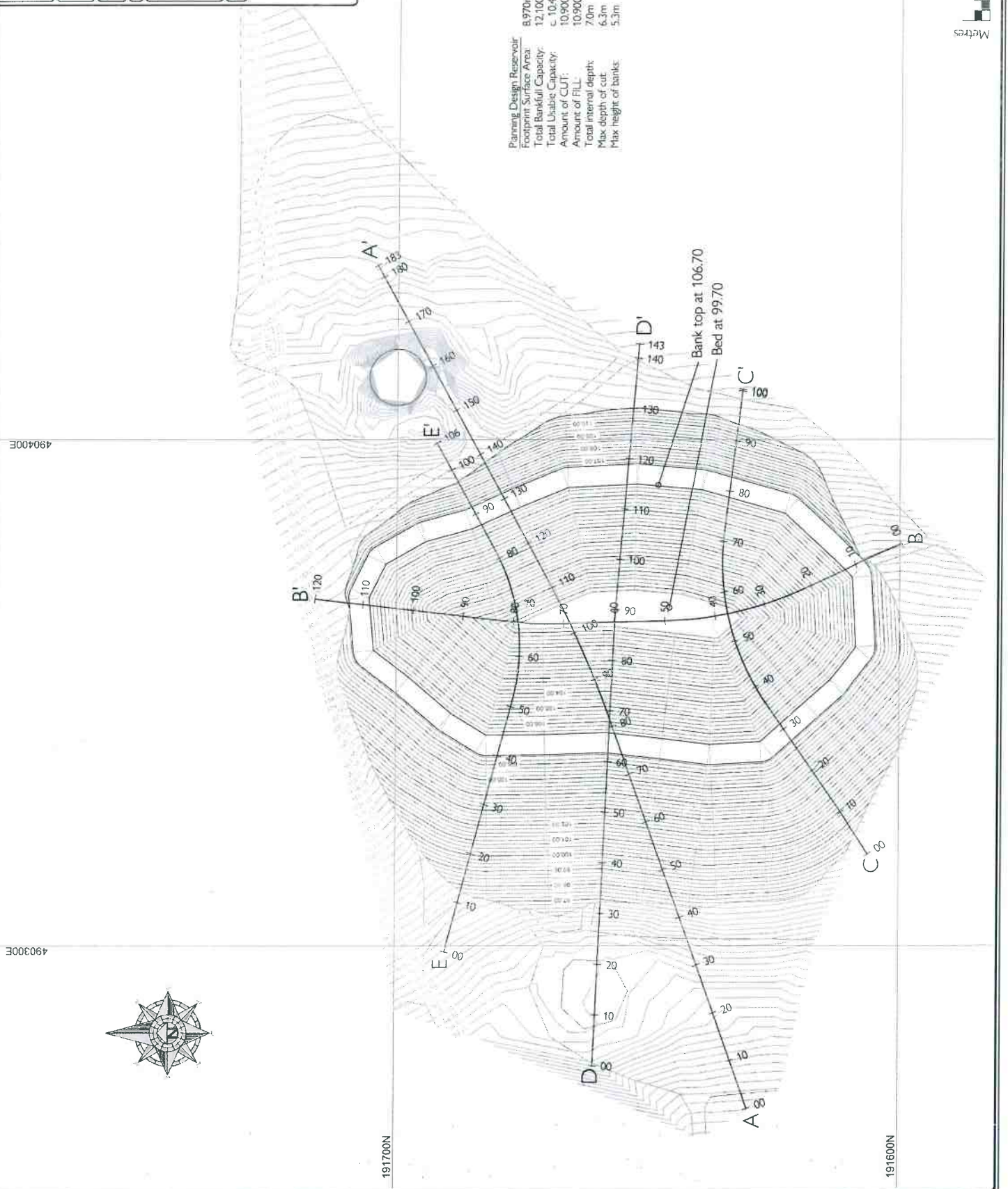
For 100% design taken from 'Plan of Proposed Reservoir' (see also ref. 507 235005)

Client	AMV	Date	08/04/19	Scale	1:500 / A2	Project No.	587235005	Sheet	1
--------	-----	------	----------	-------	------------	-------------	-----------	-------	---

HYDREAU
Consulting Engineers

Hydrology, Water Engineering, Drainage, Irrigation
Blackbird Cottage - Main Street - Boreby - Newark - Notts
T: 0333 600 7005 E: newark@hydrauak.com www.hydrauak.com

Planning Design Reservoir
 Footprint Surface Area: 8,970m²
 Total Banked Capacity: 12,100m³
 Total Usable Capacity: c. 10,400m³
 Amount of CUT: 10,900m³
 Amount of FILL: 10,900m³
 Total internal depth: 7.0m
 Max depth of cut: 6.3m
 Max height of banks: 5.3m



Wycombe Heights Golf Centre

Profiles of proposed reservoir

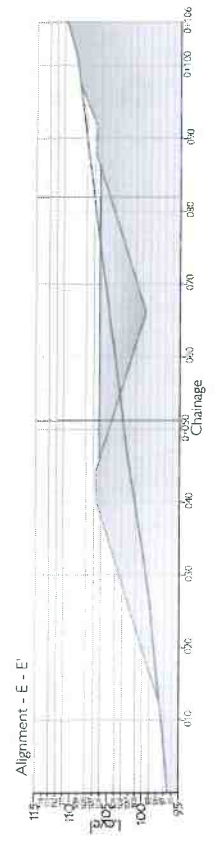
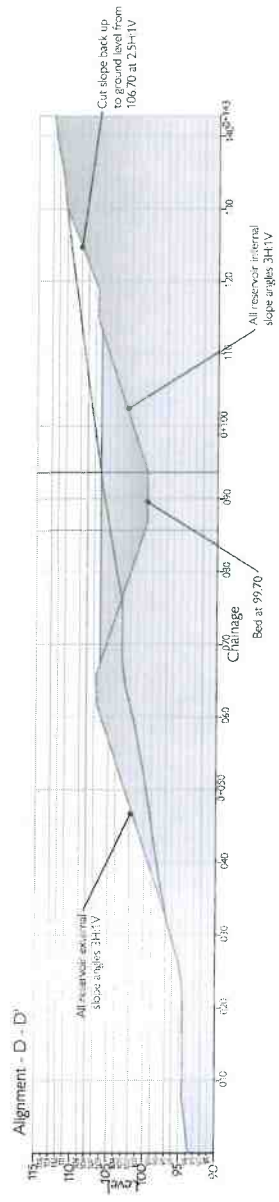
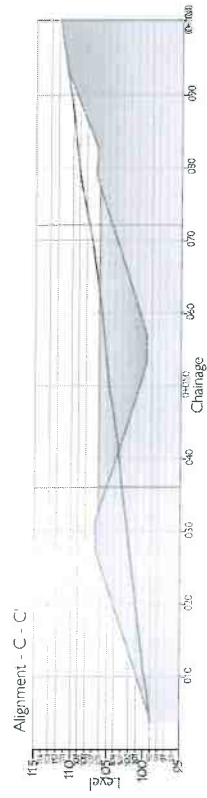
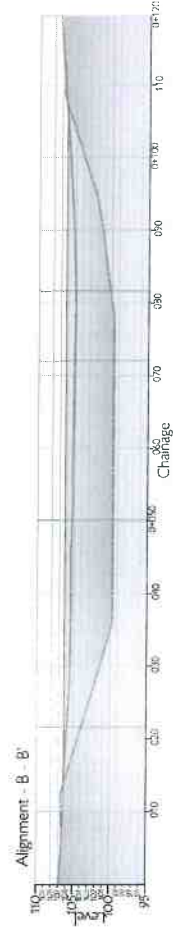
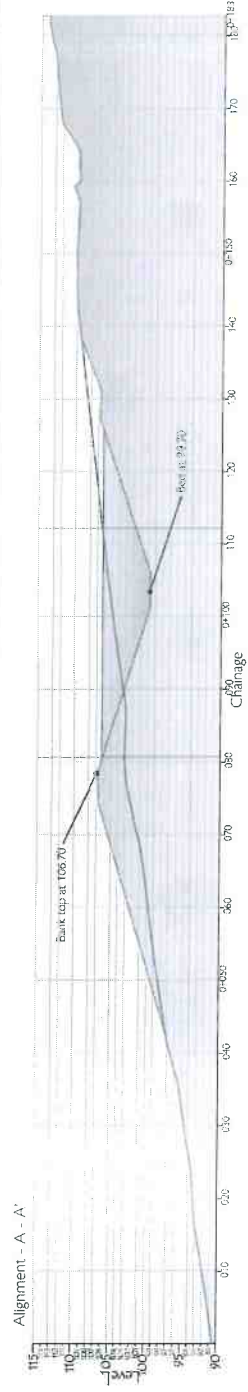
Wycombe Heights GC Water Storage

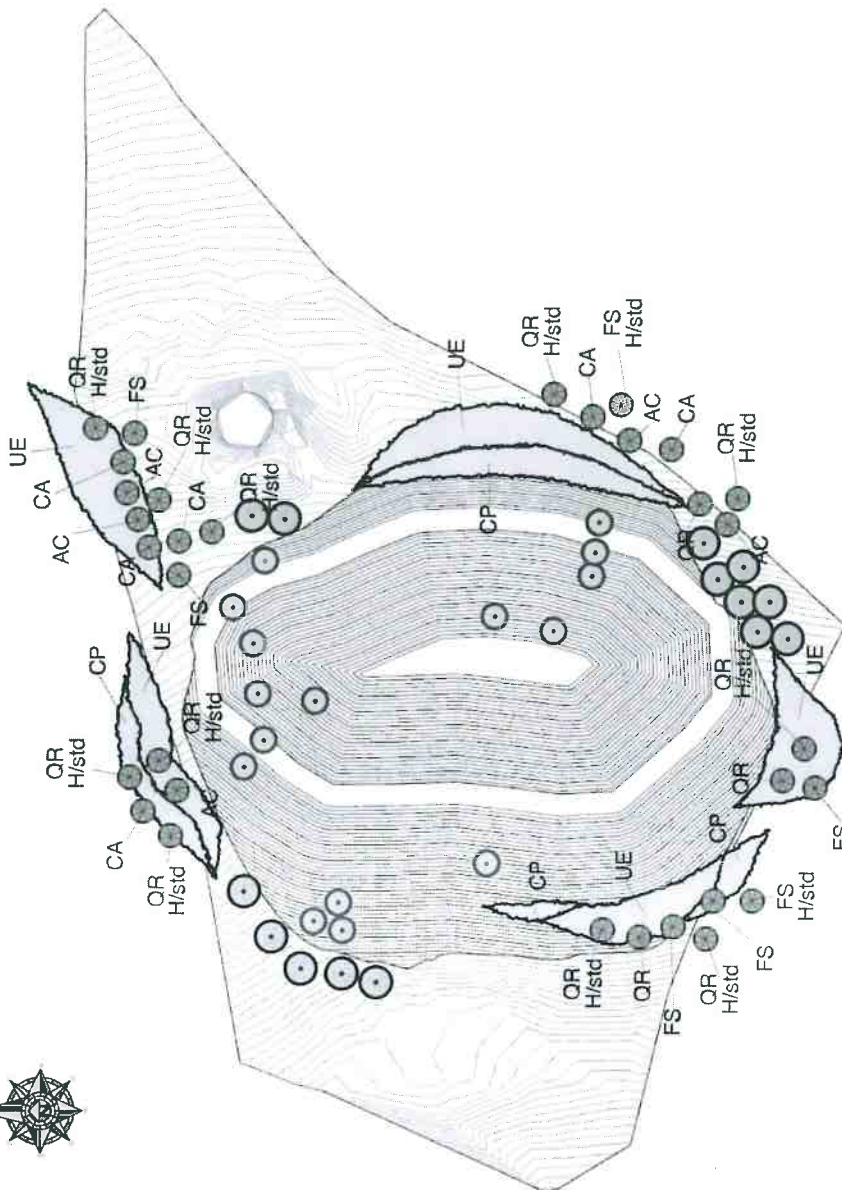
For this profiled from north west to south east. Elevation based on AOD, 1983.

Drawn by	080419	Rev	1500/A2	Project No	58723/PD/05	Sheet No	1
----------	--------	-----	---------	------------	-------------	----------	---

HYDREAU
Consulting Engineers

Hydrology, Water Engineering, Drainage, Irrigation
Blackbird Cottage - Main Street - Swerby - Sluited -
T: 01333 600 7005 E: marcos@hydreauk.com www.hydreauk.com





Planting Schedule

ABRV	Species	Size	Spacing	Qty.
QR	Quercus robur - Oak	H/Std. RB		11
QR	Quercus robur - Oak	Whip B/root 150-180cm		3
FS	Fagus sylvatica - Beech	H/Std. RB		2
FS	Fagus sylvatica - Beech	Whip B/root 150-180cm		5
CA	Corylus avellana - Hazel	Whip B/root 100-120cm		6
AC	Acer campestre - Field Maple	Whip B/root 100-120cm		5
	Shrubs			
UE	Ulex europaeus - Gorse	B/root 80-100cm	1/pm2	1505
CP	Cytisus praecox - Broom	B/root 80-100cm	1/pm2	525

KEY

- Existing trees requiring root protection zones
- Trees removed
- New trees
- New shrub planting

Notes:

The construction of the banking/slope of the irrigation reservoir will be built using a cut and fill method, and there will be no imported material. The earthwork will be compacted, and a layer of topsoil will be spread to a minimum depth of 150mm, and then fixed into place using the back of the excavator (or similar) bucket.

The trees specified on the plan will be planted as Heavy Std. Can. Mature (12-15m, girth and 2.5m tall), or as whip (60-100cm). The larger trees will create top screening, planted in appropriate species groups. The whips will take time to develop into attractive groupings, and will complement the larger trees adjacent. The spacing of the trees and shrub planting is as the plan.

Tree pits will be dug for all the heavy std. at least 100mm larger than the root ball - soil compact and fertilizer will be added at manufacturer's rates. Drainage pipes will be installed to allow watering of the tree roots from the surface. All trees will be staked into position and secured to ensure they are given the best opportunity to establish.

Revision History

Revision	Description	Date
A	Planting schedule caps changed	5/4/19
B	Planting numbers added	10/4/19
C	Notes added	13/4/19
D	Tree root protection zones added	16/4/19



Jonathan Gaunt
2010a - All rights reserved

50 Church Street, St. Brelwe
St. Brelwe, Guernsey, GY9 5AA
and j.gaunt@gauntgolfdesign.com | www.gauntgolfdesign.com



BURHILL GOLF & LEISURE LTD
WYCOMBE HEIGHTS GOLF CENTRE

**PROPOSED IRRIGATION LAKE
LANDSCAPE DESIGN PLAN**

Project	KF	Date	5 April 2019
Scale	1:1000	Rev D	16 April 2019
File No	G3D-182-2870 revD		